

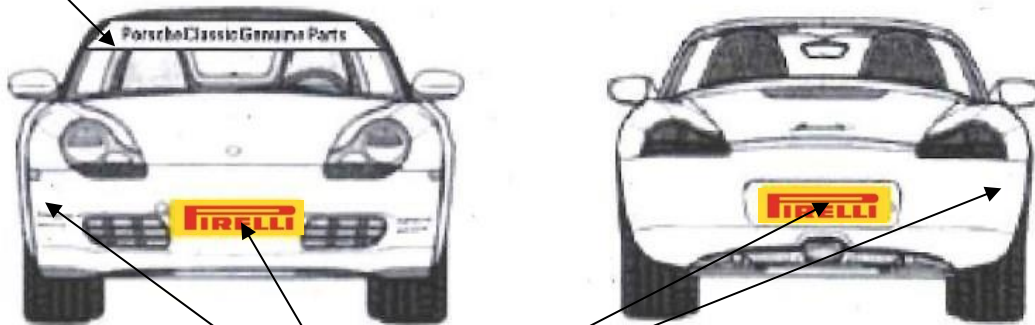


All cars competing in the Classic Restoracing Championship will be required to have the decals shown below, in the positions indicated before entering the competition (qualifying or racing). Cars not fitted with the correct decals in the correct positions, may not be allowed to participate.

The Centre / Recommended Repairer name may also appear on the car.

Note: Please do not apply decals using soapy water as this may inhibit their ability to adhere fully to the car.

Porsche Classic Genuine Parts
Screen header decal

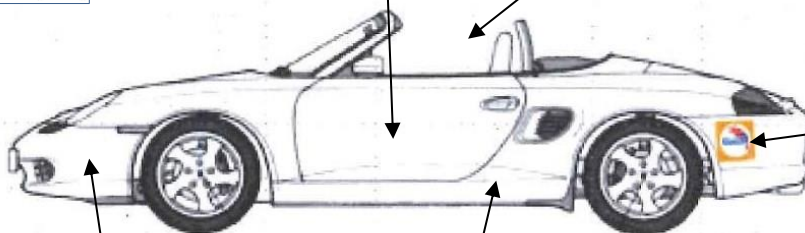


Front and rear number plate positions. Small Pirelli decals at front and rear ¾ positions



Number backing and Race numbers
One to each door. Fluorescent Yellow
Race number on front screen left side

Class identifier C3 – to be applied to left
side window



Glasurit - Rear ¾ positions



Omologato – front ¾ position



Porsche Club Championship, Stand 21 and JRZ – sill panel