

# A2



# ANDERSEN

[www.andersen-ev.com](http://www.andersen-ev.com)

A2-012020V2

## ANDERSEN DISCLAIMER

The Andersen A2 should only be installed by an electrician with the appropriate knowledge and qualifications to carry out this type of electrical installation. Failure to do so could result in injury or death.

It is the responsibility of the installer and/or designer to determine the correct residual and overcurrent protection where external influences could have an effect on inbuilt protection.

Opening of containment should only be carried out when the supply is isolated from the mains. The undertaking any live testing should only be carried out by a person or persons qualified to do so.

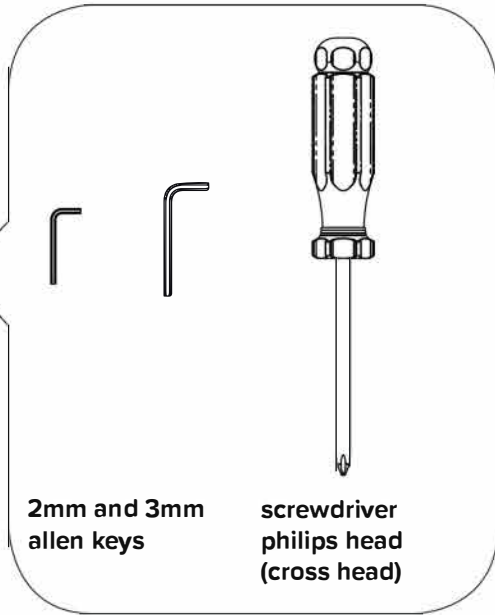
The installation instructions should be followed closely to ensure correct installation and commissioning. Failure to follow these instructions could result in damage to the Andersen charger, existing installation or supplier's equipment.

During and on completion of the installation, the installation shall be inspected and tested to verify that it complies with the latest amendment of the BS7671.

Before the Andersen A2 is put into service, we as the manufacturer require the installer to simulate a charge with a recognised EVSE adaptor and multifunction tester.

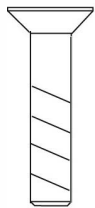
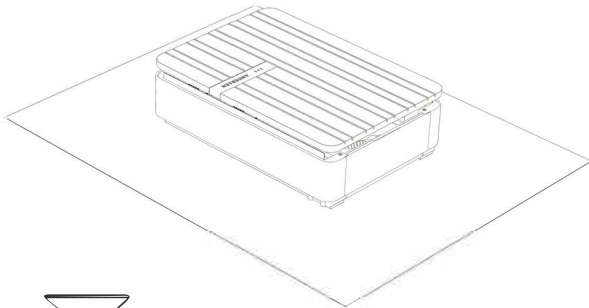
Use of this equipment should only be undertaken by someone who has an understanding of its functions and has the experience and knowledge to do so.

# ANDERSEN A2

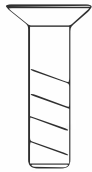


2mm and 3mm allen keys

screwdriver philips head (cross head)



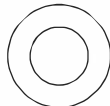
x29 M3 x 16mm long screw



x2 M5 x 12mm long screw



x4 M5 x 8mm counter sunk screw



x2 6mm penny washer



x2 6mm washer

## OPERATION LED STATUS



System powering up. Red, Amber, Green LED flash together twice a second



Standby State (solid green)



Vehicle connected state (solid green & solid amber)

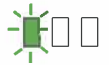


Vehicle charging state (solid amber)



Charge point locked or awaiting scheduled charge (solid green & solid red)

## ERROR & UPDATE LED STATUS



Disconnected from network/cloud (green LED flash every 5 seconds)



RCM or charge error (blip red every second)



Firmware upgrade (sequence of green, amber, red for duration of upgrade)

## SETUP LED STATUS



Wifi Setup (Amber LED flash once per second)



Reset warning. Red, Amber, Green LED flash 4 times per second.

## SETUP MULTI FUNCTION OPERATION



x2 Reset RCM (Two button presses)



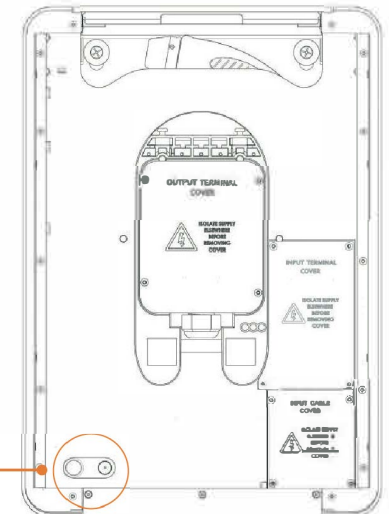
x3 Enter Network setup mode (Three button presses)



x1 Exit Network setup mode (One button press)



x5 Enter unit reset mode (Five button presses) + Exit Timeout 30 secs

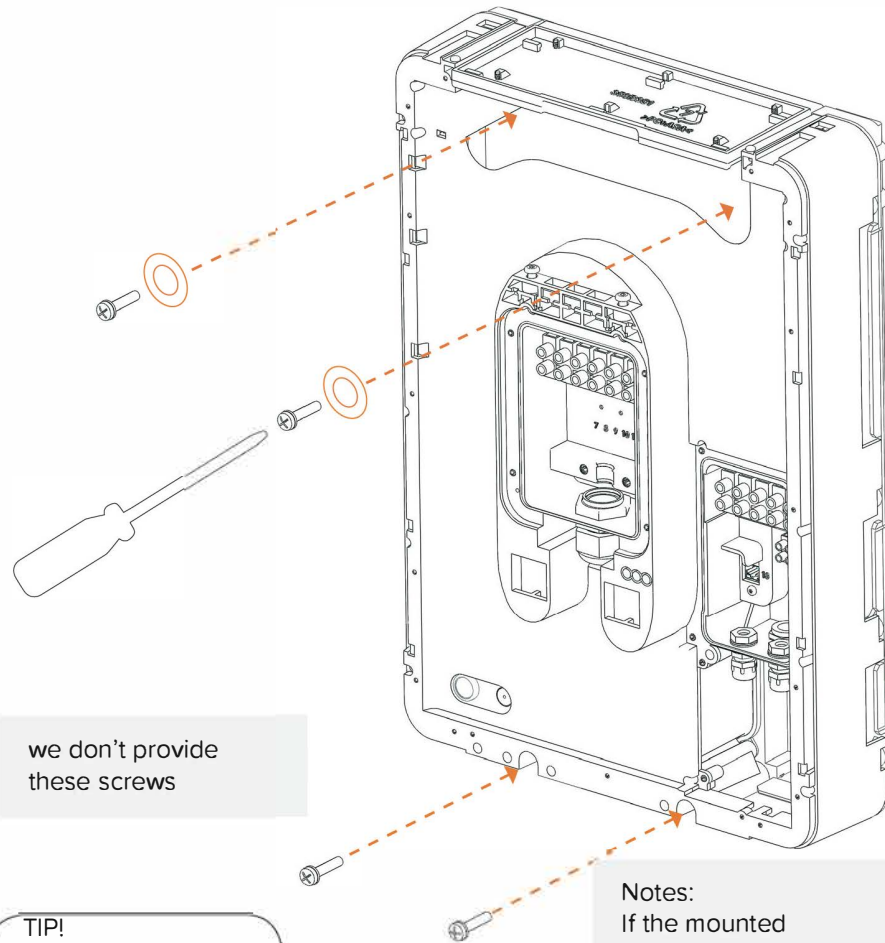


Multi function button located at the bottom left inside the cable slot

# Step 1: Installing A2 unit to wall

x2  
6mm penny washer

x2  
6mm washer



we don't provide  
these screws

**TIP!**  
Install top fixings  
first then mark the  
bottom holes of the  
unit

**Notes:**  
If the mounted  
surface is uneven use  
spacers to ensure  
the unit core is sitting  
flush to the wall

## Step 2: Prepare A2 core for supply cable entry

Default cable entry is from the rear See Fig: 1

Note:  
this can be done on wall

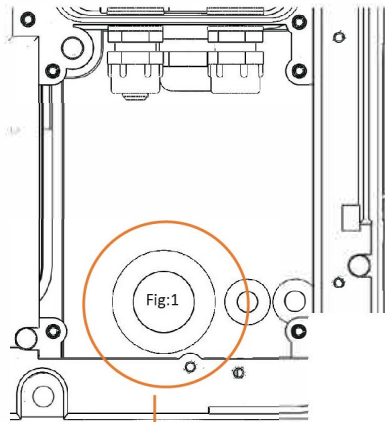


Fig 1

Bottom entry drill out cable entry section with 20 25mm hole saw, see Fig :2  
Use rubber grommet from the rear cable entry hole

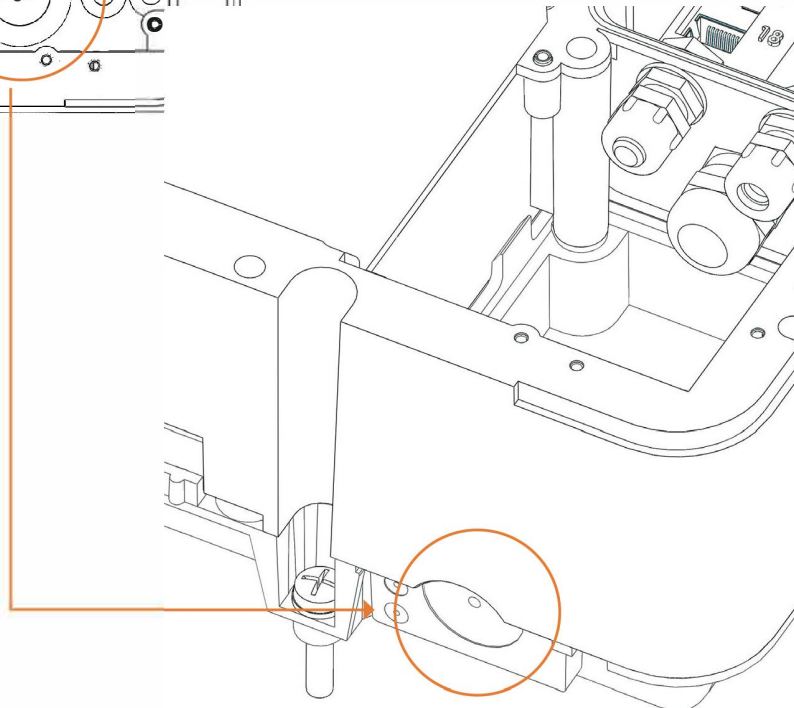
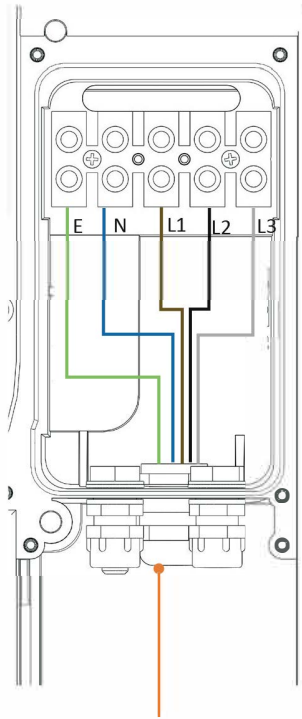
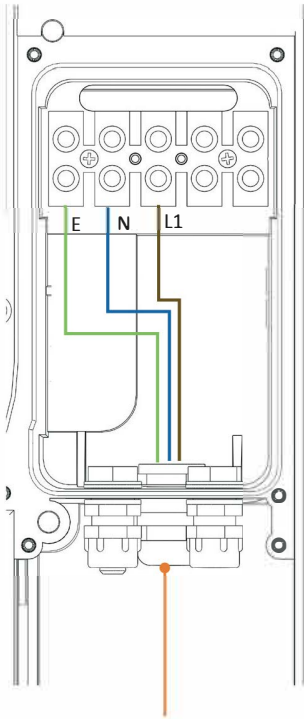


Fig 1

# Step 3: Terminate supply power cable

Single Phase installation

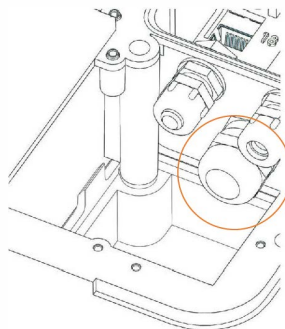
Three Phase installation



TIP!  
Suggested cable types PVC or SWA

Incoming single phase supply

Incoming three phase supply

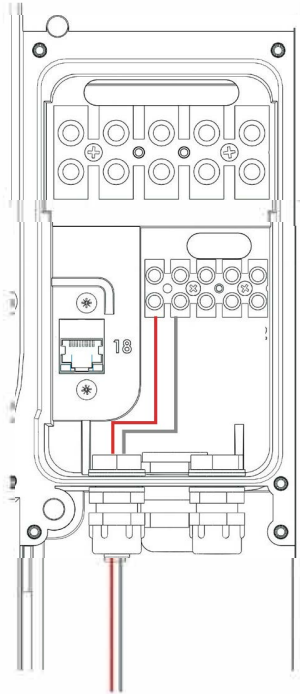


Important.  
Make sure the gland is tightened after cable installation

Note:  
HI TUFF cable not recommended, It is very difficult to terminate

## Step 4: Terminate sensor cables

**Solar Advanced CT  
sensor cable**  
\* Optional

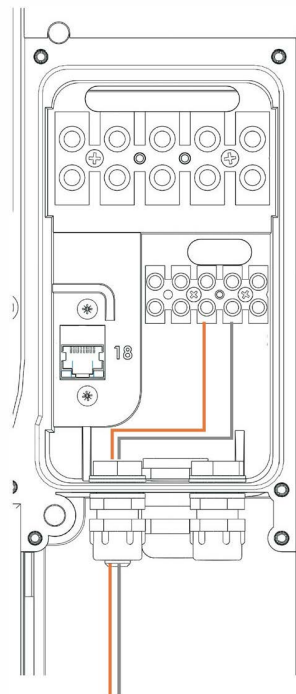


Solar Advanced CT

Note: Fit CT clamp to PV inverter supply. Orientation can be determined during testing.

Recommended Cable:  
Shielded twisted  
pair e.g. CAT5e/CAT6

**Solar Basic / Adaptive  
Fuse CT sensor cable**  
\* Optional

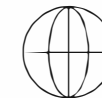


Solar Basic/Adaptive CT

Note: Fit CT clamp to incoming supply. Orientation can be determined during testing. CT orientation can be confirmed in dashboard using a load reference i.e. kettle 3Kw

Recommended Cable:  
Shielded twisted  
pair e.g. CAT5e/CAT6

If you have questions use our helpful support resources



[www.andersen-ev.com/support](http://www.andersen-ev.com/support)



[support@Andersen-ev.com](mailto:support@Andersen-ev.com)



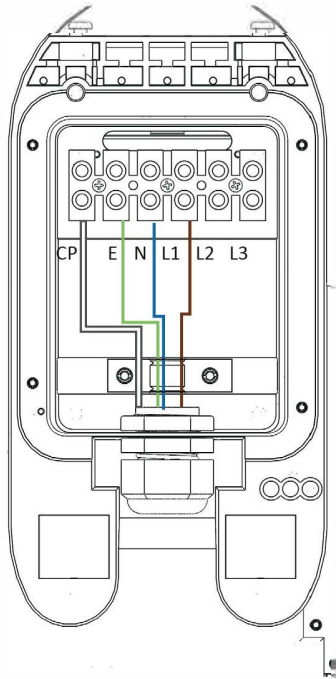
+44 (0) 203 8904510



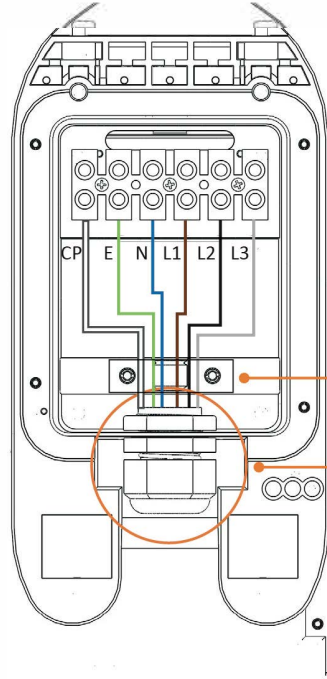
Andersen Chat

## Step 5: Terminate vehicle side charging cable

Single Phase cable



Three Phase cable



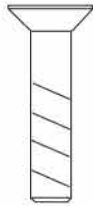
Important.  
Ensure cable  
stress relief  
clamp is  
correctly  
tightened



Important.  
Make sure  
the gland is  
tightened  
after cable  
installation!

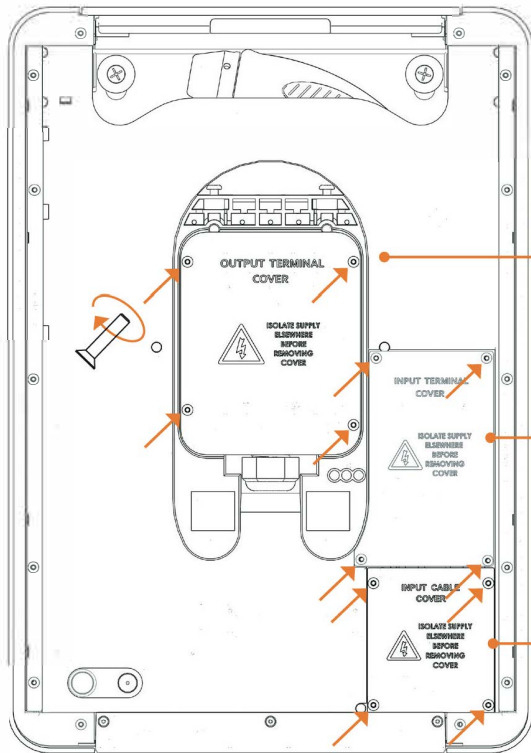
Orange cable not used

## Step 6: Fit weather project covers



x12  
M3 x 16mm long  
countersunk screw  
steel

Torque setting must be  
0.7Nm



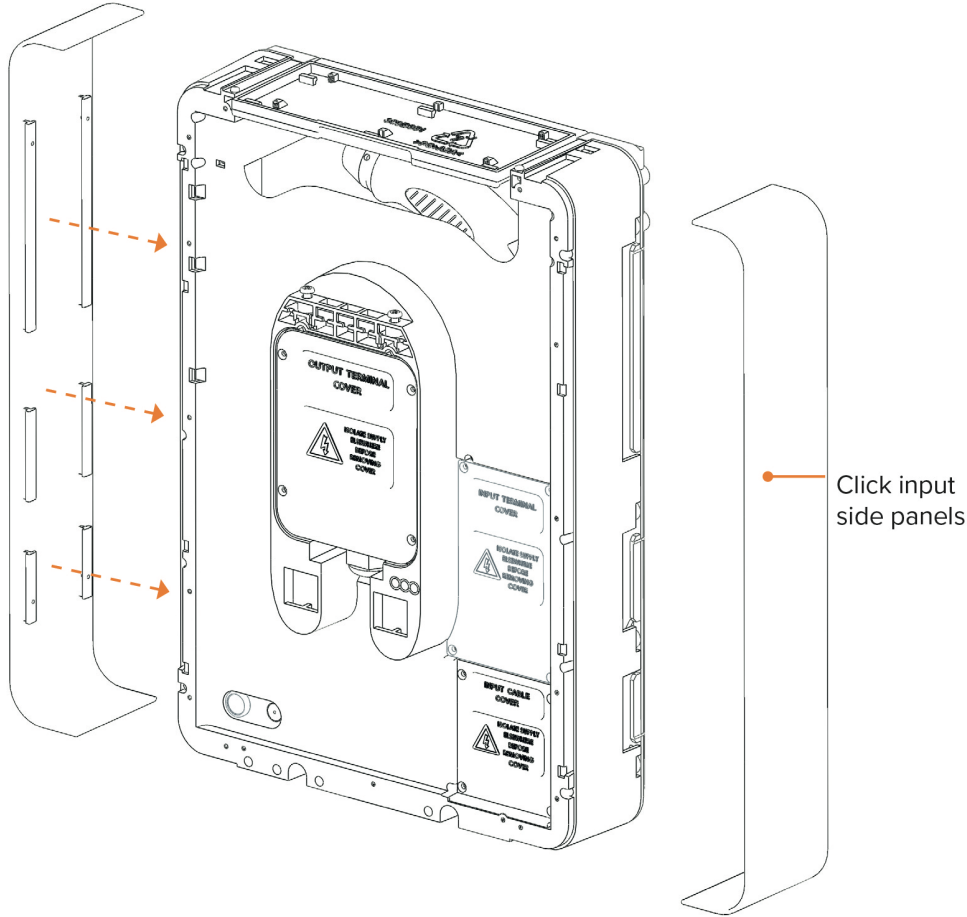
A: Fit Output terminal cover  
Ensure seals are correctly  
positioned and fixing  
screws correctly torqued to  
0.7Nm

B: Fit input terminal cover  
Ensure seals are correctly  
positioned and fixing  
screws correctly torqued to  
0.7Nm

C: Fit input supply cover  
Ensure seals are correctly  
positioned and fixing  
screws correctly torqued to  
0.7Nm

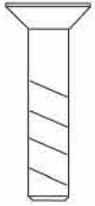


# Step 7: Fit side panels

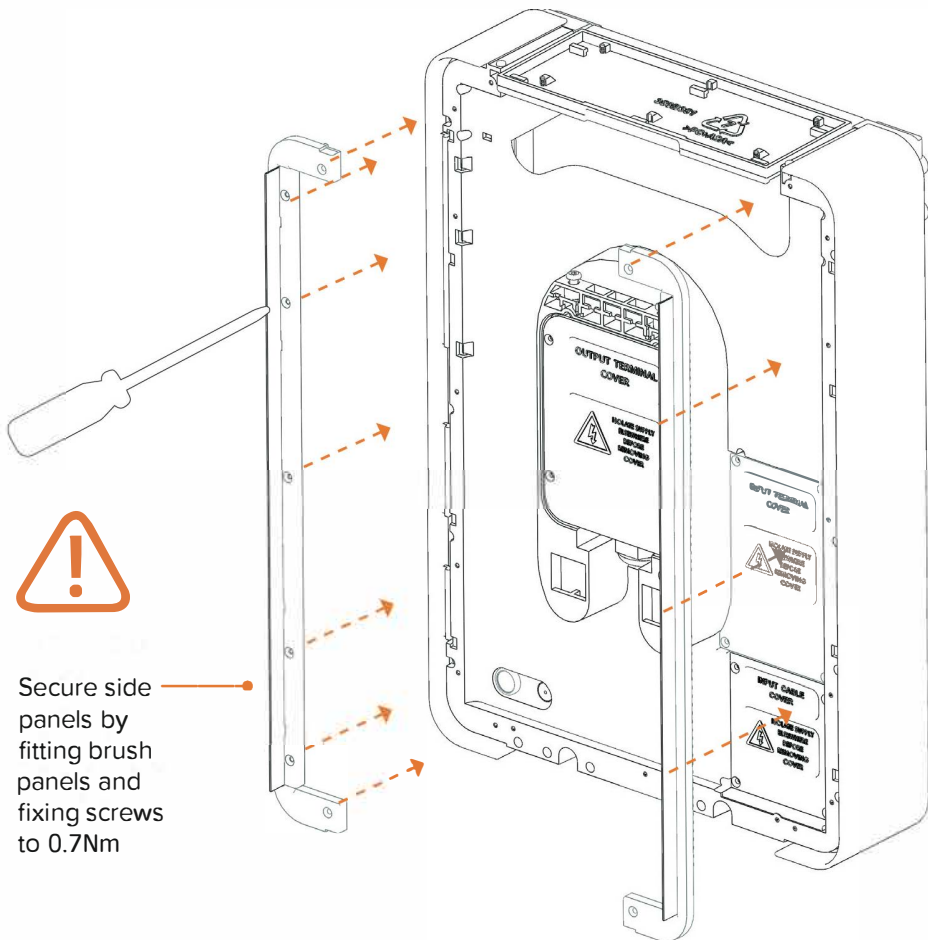


Note:  
For further tips and  
tricks see our support  
videos

## Step 8: Fit cable brushes



x14  
M3 x 16mm long  
screw

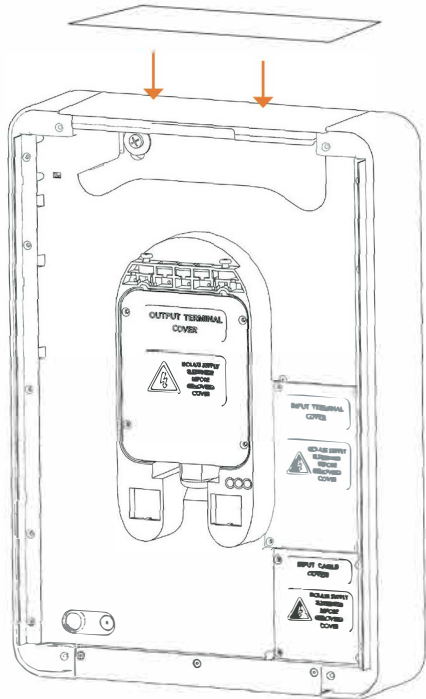


## Step 9: Fit lid panel

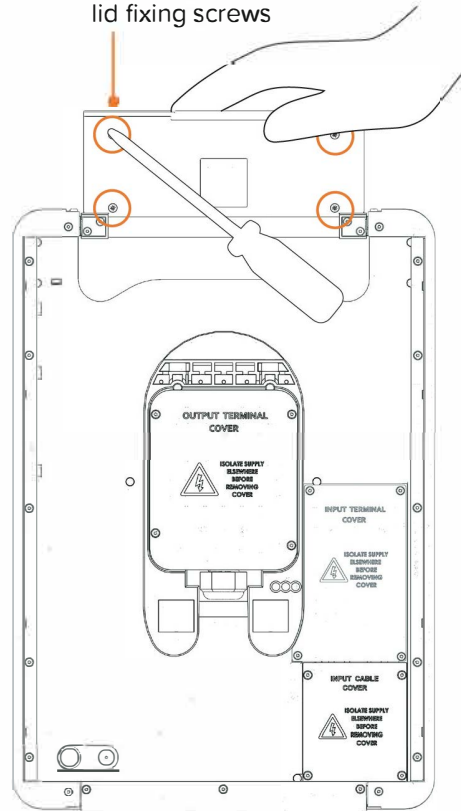


x4  
M5 x 8mm counter sunk screw

A: Click lid panel into the lid core

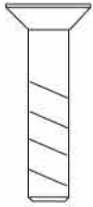


B: Insert and tighten lid fixing screws

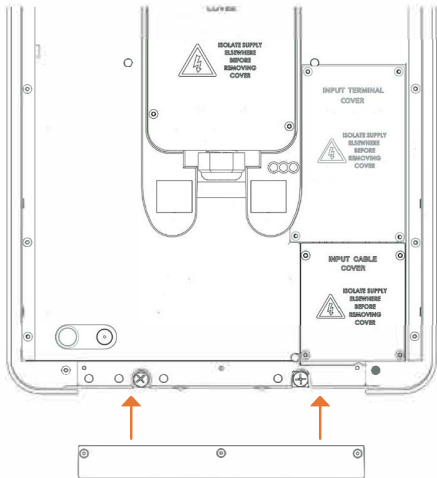


Note:  
For further tips and tricks see our support videos

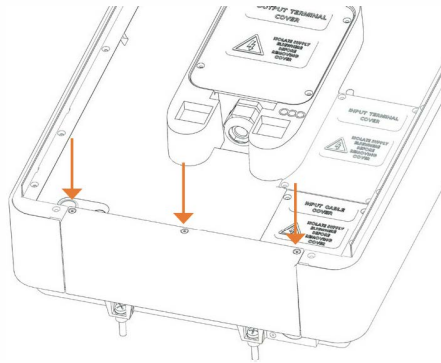
## Step 10: Fit bottom panel



x3  
M3 x 16mm long screw



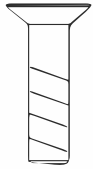
A: Fit bottom cover



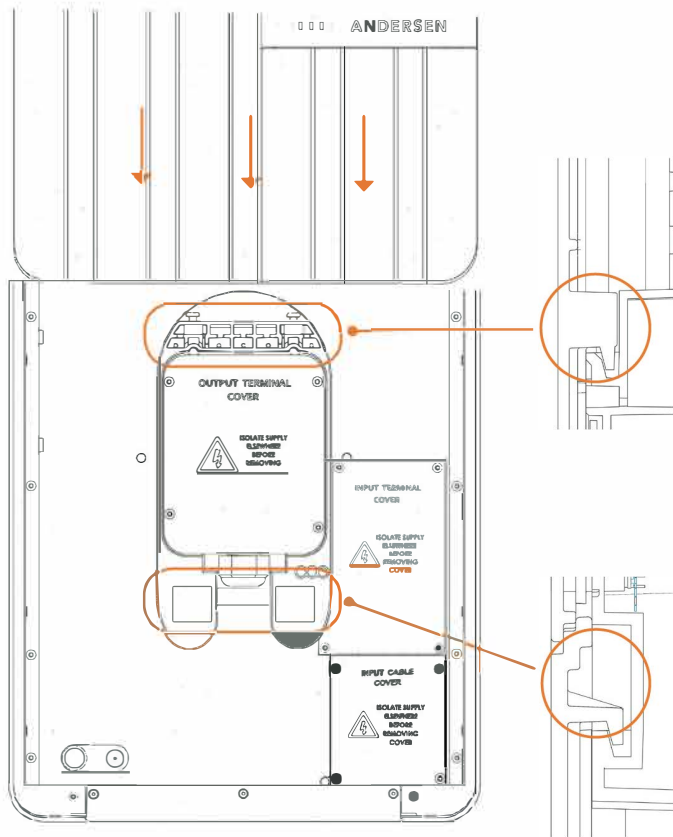
B: Tighten screws to 0.7Nm

Note:  
For further tips and tricks see our support videos

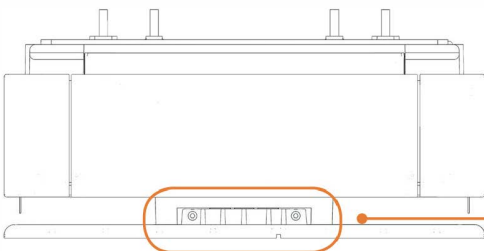
## Step 11: Fit front panel



x2  
M5 x 12mm long screw



A: Ensure the front panel mounts are located into the slots correctly



B: insert and tighten front panel screws correctly torqued to 2.5Nm.

## Danger

Danger to life due to electrical voltage! Injuries due to electric shock and/or burns, possibly resulting in death, are possible.

During all work, make sure at all times that power to the system is switched off and secured so it cannot inadvertently be switched on.

- Before commissioning the device check that all screw and terminal connections are tight.
- The termination panel covers must never be left opened without supervision. Fit the termination panel cover when you leave the charge point.
- Do not make any unauthorised changes or modifications to the charge point.
- Repair work to the charge point may only be completed by the manufacturer or a trained expert.
- Do not remove any identifiers such as safety symbols, warning instructions, rating plates, labels or cable markings.
- Ensure that the charging cable is not mechanically damaged (kinked, jammed or run over) and that the contact area does not come into contact with heat sources, dirt or water.

## Warning

Safety notice:

- Isolate all poles and from all live sources.
- Lock off to prevent re-energising of the supply.
- Verify isolation from the supply.
- Electrical safety warning notices applied.
- Cover neighbouring live parts and cordon off danger areas.

## Caution

Ensure that the charge point is not damaged by incorrect handling (housing cover, internal parts, etc.).

On outdoor installations, do not open the termination panel cover in damp conditions.

Danger of breaking the plastic housing.

- Do not tighten the securing screws with force.
- The installation surface must be completely flat, do not bend the housing.
- Electronic components may be damaged if handled. Before handling modules, perform an electrical discharge process by touching a metallic earthed object.

A failure to follow the safety information may result in a danger of death, injury and damage to the device. The device manufacturer cannot accept any liability for claims resulting from this.